

VERTICAL SURFACE FABRIC

TERRA 



7552 PARCHMENT



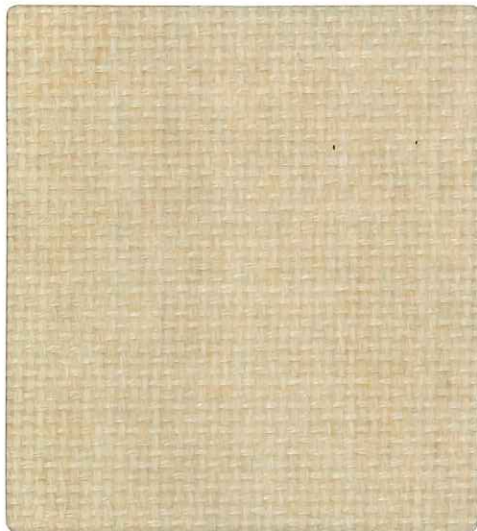
7558 CREAM NEUTRAL



7562 HARVEST



7554 DOE



7551 SHELL



7549 CORAL NEUTRAL



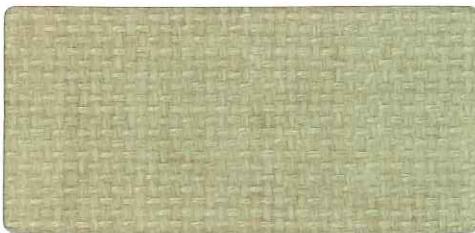
7548 NUDE



7555 TEA LEAF



7557 TAUPE



7563 WILLOW



7559 SAGE



7556 CELERY



7553 PUTTY



7560 MEDITERRANEAN



7564 VERDIGRIS



7561 PEWTER



7565 GRAPE



7546 TOPAZ



7547 ALPINE



U.L. RECOGNIZED COMPONENT

FABRIC SPECIFICATIONS

| | |
|----------------|-------------------------|
| CONTENT | 100% RECYCLED POLYESTER |
| WEIGHT | 16 OZ/LIN YD +/- 0.5 |
| WIDTH | 66" USEABLE |
| ORIGIN | USA |

PERFORMANCE CHARACTERISTICS

| | |
|---------------------------------------------|----------------------------------|
| TENSILE STRENGTH ASTM D5034 | WARP: 150 LBS. FILL: 150 LBS. |
| TEAR STRENGTH ASTM D2261 | WARP: 30 LBS. FILL: 30 LBS. |
| COLORFASTNESS TO LIGHT AATCC 16-E | 40 HRS. CLASS 5 |
| COLORFASTNESS TO CROCKING AATCC 8 | 4.0 DRY, 4.0 WET |

FLAMMABILITY

| | |
|-------------------------------------------------------------------|--------------|
| ASTM E-84 (TUNNEL TEST) | CLASS A OR 1 |
| CALIFORNIA TECHNICAL BULLETIN 117 SECTION E (CS-191-53) | PASSES |
| NFPA 701 | PASSES |

RECOMMENDED CLEANING CARE

| | |
|------------|--------------------------------------------------------------------------------------------------------------------------------------------------------------------------------------------|
| W-S | WATER-BASED CLEANING AGENTS AND FOAM MAY BE USED FOR CLEANING. THIS FABRIC MAY ALSO BE CLEANED WITH MILD, WATER-FREE SOLVENTS. CLEANING BY A PROFESSIONAL CLEANING SERVICE IS RECOMMENDED. |
|------------|--------------------------------------------------------------------------------------------------------------------------------------------------------------------------------------------|

VARIATIONS IN COLOR AND TEXTURE ARE INHERENT TO THIS TEXTILE.



U.L. RECOGNIZED COMPONENT: THIS FABRIC CAN BE APPLIED WITHOUT NEED FOR FURTHER TESTING TO ANY OFFICE PANEL SYSTEM WHICH HAS BEEN AUTHORIZED FOR USE WITH FABRICS INCLUDED IN UL'S FABRIC RECOGNITION PROGRAM.



OEM ORIGINAL: THIS PRODUCT IS THE VERTICAL SURFACE FABRIC UTILIZED ON SYSTEMS PRODUCED BY LEADING ORIGINAL EQUIPMENT MANUFACTURERS.



TERRATEX® IS A REGISTERED TRADEMARK OF INTERFACE FABRICS GROUP AND DESIGNATES FABRICS THAT ARE MADE FROM 100% RECYCLED OR COMPOSTABLE MATERIAL USING INCREASINGLY SUSTAINABLE MANUFACTURING PRACTICES TO PRODUCE A HIGH QUALITY PRODUCT THAT IS RECYCLABLE AT THE END OF ITS USEFUL LIFE.



**BURCH FABRICS
GROUP**