



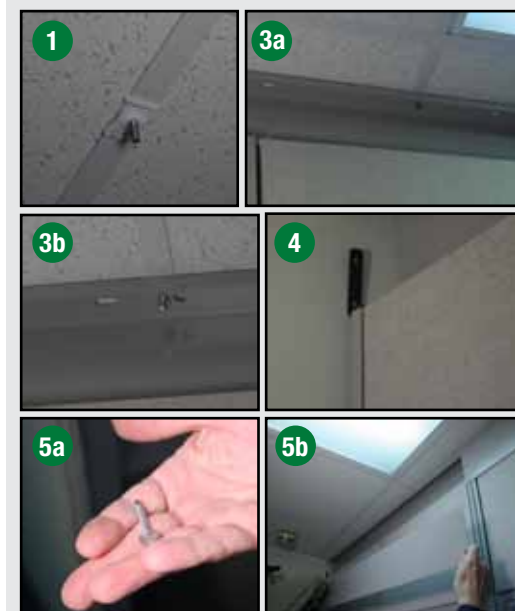
EXISTING WALL POLYSTAX INSTALLATION

1. Prior to installing PolyStax ensure donor wall is level
2. Remove top cap and top cap reveal and end filler off donor panel
3. Donor panel is ready to accept the PolyStax unit
4. Make sure the donor panel has the wall mount brackets attached at the top and bottom
5. Splice plate – mounts on top of the donor panel
6. Donor panel is ready to receive PolyStax Unit
7. Prepare the PolyStax Unit
8. Bottom of PolyStax has a T-bracket with non-threaded clearance holes
9. Lay pork chop kit to donor panels –do not screw in the pork chop. The pork chop will be “sticking” out (9d)
10. Remove end caps from PolyStax unit.
11. Place PolyStax on donor panel
12. Partially bolt the pork chop into place, install the end cap, then tighten the pork chop connection.
13. Re-install end caps – if the end caps are sticking, use dish soap or paraffin to lubricate the surface to easier installation.
14. At the end of the panel run, use an end filler to maintain panel height.



If you fail to make a proper connection, you will need to dis-assemble the wall from the top down.

15. **ALWAYS INSTALL PANEL RUN FIRST** before **ANY** wall mounted components.
16. **CHANGE of HEIGHT CONDITION** in Panel Run **USE END FILLER**
17. Install end filler instead of pork chop
18. Conditions for using an end filler are change of height!
19. **CHANGE OF DIRECTION** in Panel Run **USE TEAR DROP**
20. Mounting a PolyStax connection to a monolithic panel height



FLOOR TO CEILING WALLS

TIP Install ceiling track first

1. Grid clips are NOT included with the ceiling track.
 - Install grid clips to the ceiling grid T-bars.
 - Grid clips “slide” back and forth to assist alignment.
2. Manually drill holes in the ceiling track to match the ceiling grid clips
3. Attach ceiling track to the ceiling grid clips
4. At the end of the panel run install wall mount brackets at the top of both ends to secure the top of the panel to the wall.
5. Use self-tapping truss screws (not provided) to secure the ceiling track shroud. CIT, use 2 people to help align and hold the ceiling track shroud.

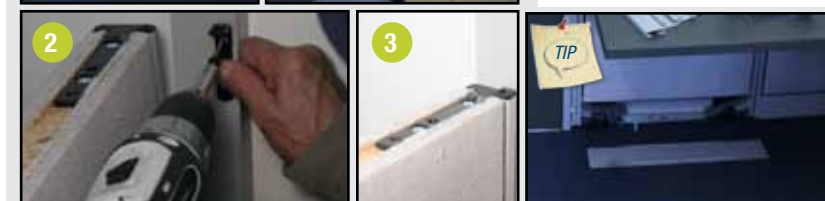


WALL TO WALL INSTALLATION

1. Most likely you will need a field fit solution to adjust for the gap between the existing walls and the CMW panel run, example: custom made shim shown here.
2. Install short wall mount brackets at the end of the run. Mark on the shim the height. Use Phillips head flat head screws to install short wall mount brackets.
3. The last panel that connects to the wall requires pins attached to the wall mount bracket. Use a pork chop connector on all other parts of the panel run, see installing a PloyStax unit. Pork chop at the top of the door and at the bottom

TIP Remove base cover before putting panel into place for easy access to the glides and hardware.

4. If there is slight gap at the end of the run, use gray open cell foam to eliminate the light gap. Furring strips can also be used. This will occur if the wall is not plumb.





DOOR INSTALLATION

1. Ensure pork chop connector is installed at the top and bottom of the door.
2. Install door secure door using straight pins on door t-brackets.

