

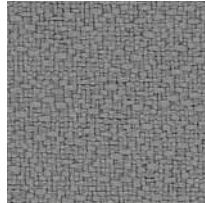
Anchorage 2335

Open House 2334

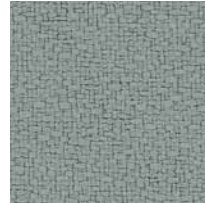
Panel - 2335
Upholstery - 2334



Birch
2129



Asteroid
2053



Slate
2017



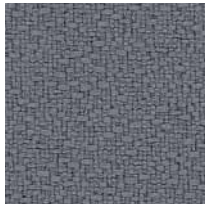
Green Olive
2048



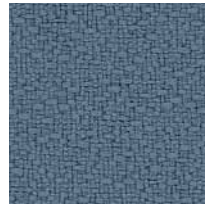
Amber
2020



Vanilla
2130



Wolf
2027



Quarry Blue
2026



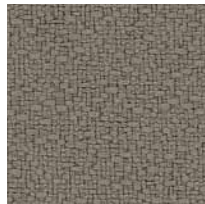
Eucalyptus
2047



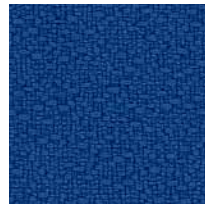
Pumpkin
2021



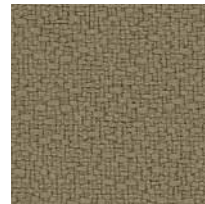
Angora
2035



Goose
2049



Lapis
2094



Cumin
2050



Geranium
2084



Straw
2034



Fossil
2093



Thistle
2085



Green Apple
2087



Red Delicious
2014



Sunshine
2082



Graphite
2079



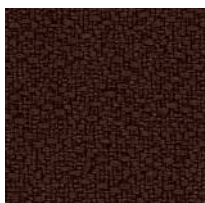
Cobalt
2045



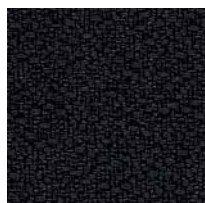
Willow
2028



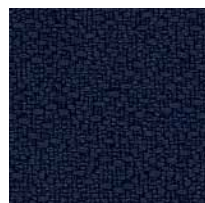
Mulberry
2044



Coffee Bean
2083



Onyx
2016



Midnight
2025



Pine Needle
2022



Aubergine
2036



4710 44th Street SE
Grand Rapids, MI 49512

800-336-1772 Phone
616-940-1040 Fax

www.compatico.com

11/13

Anchorage 2335 Open House 2334

Specifications

Contents

35% post-consumer recycled polyester
65% pre-consumer recycled polyester

Weight

Anchorage - 15.0 ± 1.0 oz./lin. yd.
Open House - 12.4 ± 1.0 oz./lin. yd

Width

Anchorage - 66" min. useable
Open House - 54" min. useable

Repeat

none

Abrasion (ASTM D4157)

250,000 double rubs min. cotton duck

Cleaning Code

W-S

Performance



Miscellaneous

Proudly woven in the USA supporting our local communities.
Colors may vary slightly between dye lots.
This is a directional fabric.
Application testing of this product is recommended.
10 year performance warranty on Open House 2334.



Guilford of Maine®

Visit guilfordofmaine.com for complete specs and samples.



Terratex is a registered trademark of True Textiles, Inc. and designates fabrics that are made from 100% recycled or compostable material using increasingly sustainable manufacturing practices to produce a high quality product that is recyclable at the end of its useful life. (terratex.com)



CO₂ emissions from 100% of the electricity used by the manufacturer to produce this product have been measured and offset in accordance with The CarbonNeutral Protocol.



This fabric is included in the underwriters laboratory panel fabric recognition program. Additional testing of this U.L. recognized component fabric is not required on approved panels from participating manufacturers.

*ACT® registered certification marks.